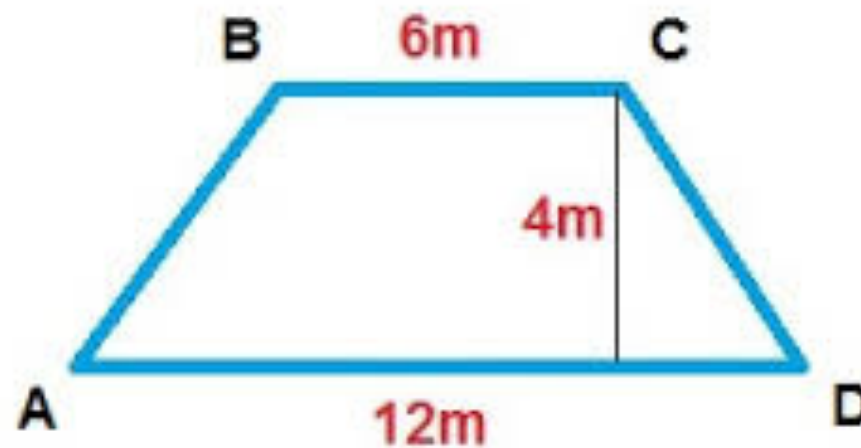


# Daily Review

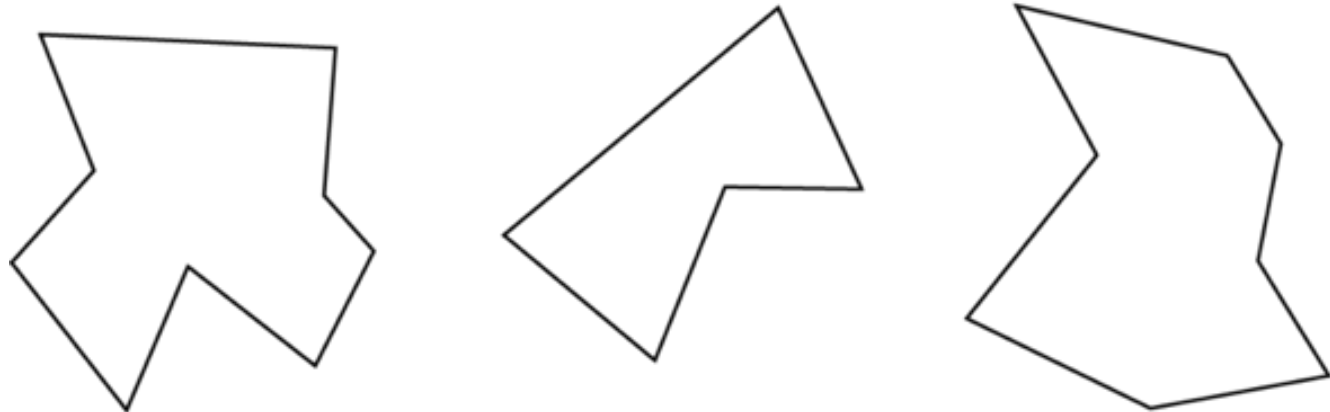
- What is the area for volume of a rectangular prism?
- Solve and graph:  $2+x>5$
- What is the area of a triangle with a base of 3 inches and a height of 4 inches?
- Find the area of the following trapezoid.



# Area of Composite Figures

- Composite figures- Figures made up of multiple shapes
- Polygons- Multi-sided figure
- Today, we are concerned with finding the area of figures that are not just simple squares, triangles, etc.

## Irregular Polygons

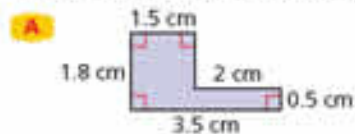


# Area of Composite Figures

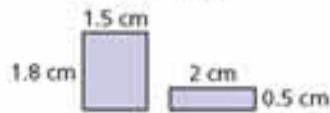
- The key to finding the area of composite figures is to break the figure up.
- Find shapes you do know how to find the area of, then add.

## Finding Areas of Composite Figures

Find the area of each polygon.



*Think: Break the polygon apart into rectangles.*



*Find the area of each rectangle.*

$$A = \ell w \quad A = \ell w$$

*Write the formula for the area of a rectangle.*

$$A = 1.8 \cdot 1.5 \quad A = 2 \cdot 0.5$$

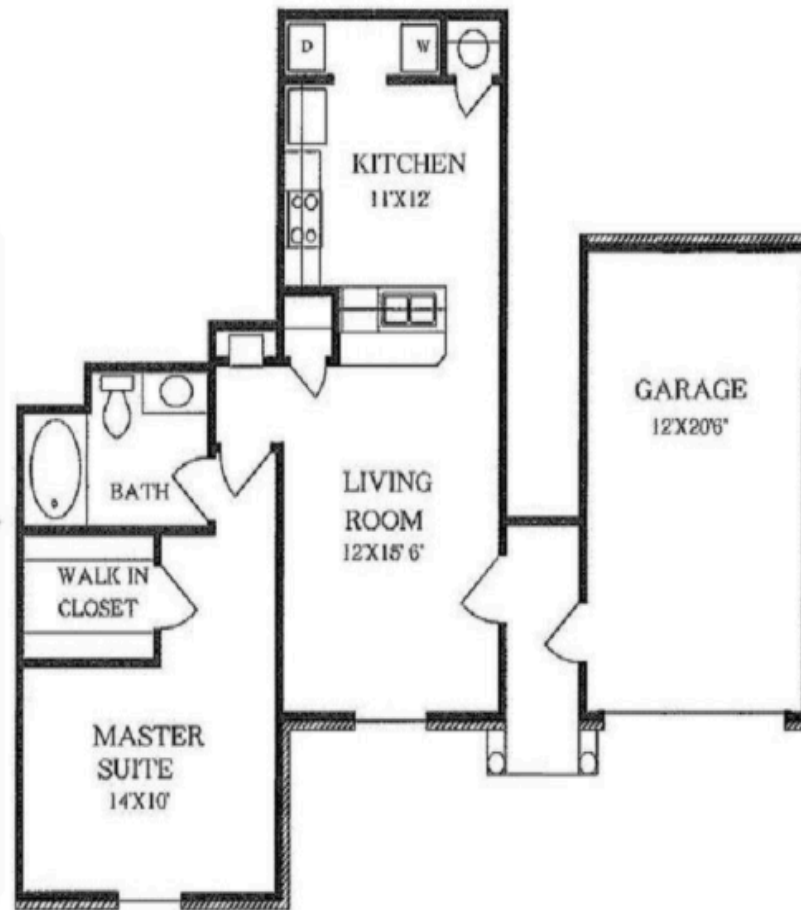
$$A = 2.7 \quad A = 1$$

$$2.7 + 1 = 3.7$$

*Add to find the total area.*

The area of the polygon is  $3.7 \text{ cm}^2$ .

# Real Life





# Worksheet

Quizzizz



# Reminders

Study Guide due Wednesday

Worksheet due tomorrow